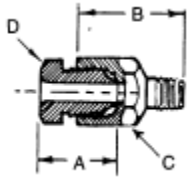


Threaded Sleeve Tube Fittings for use on 1/8" O.D. Nylon and 1/8" O.D. Steel Tube



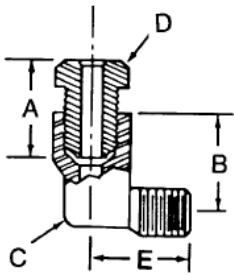
Threaded Sleeve Tube Fittings – Straight

Tube to Male Thread

Carbon steel body with brass nut unless otherwise noted

* 303 Stainless Steel **Brass

Part No.	Tube O.D.	Thread	A	B	Hex C	Hex D	Working Pressure PSI
66771	1/8"	10/32"	1/2"	11/16"	3/8"	5/16"	500 PSI
66714	1/8"	1/4"-28	1/2"	5/8"	3/8"	5/16"	500 PSI
*66714-9	1/8"	1/4"-28	1/2"	5/8"	3/8"	5/16"	500 PSI
66772	1/8"	1/4"-28	1/2"	11/16"	3/8"	5/16"	500 PSI
66730	1/8"	5/16"-32	1/2"	11/16"	3/8"	5/16"	500 PSI
66773	1/8"	3/8"-24	1/2"	11/16"	7/16"	5/16"	500 PSI
**66415	1/8"	1/8" NPT	1/2"	5/8"	7/16"	5/16"	500 PSI

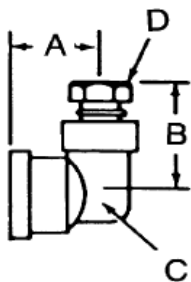


Threaded Sleeve Tube Fittings – 90 Degree

Tube to Male Thread

Brass body with brass nut

Part No.	Tube O.D.	Thread	A	B	Flats C	Hex D	E	Working Pressure PSI
66716	1/8"	1/4"-28	1/2"	1/2"	13/32"	5/16"	33/64"	500 PSI
66414	1/8"	1/8" NPT	1/2"	1/2"	7/16"	5/16"	21/32"	500 PSI

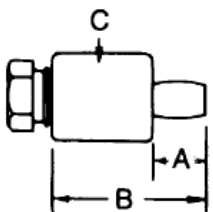


Threaded Sleeve Tube Fittings – 90 Degree

Tube to Female Pipe

Carbon steel body with brass nut

Part No.	Tube O.D.	Thread	A	B	Flats C	Hex D	Working Pressure PSI
66935	1/8"	1/8" NPT	23/32"	1-1/32"	3/8"	5/16"	500 PSI

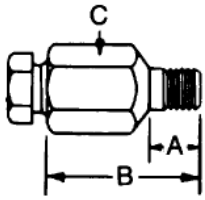


Threaded Sleeve Tube Fittings – Drive Type

Carbon steel body with brass nut

Part No.	Hole Size	Tube O.D.	A	B	Diam C	Hex D	Working Pressure PSI
82092	3/16"	1/8"	13/64"	45/64"	7/16"	5/16"	500 PSI

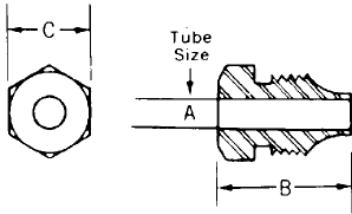
Threaded Sleeve Tube Fittings for use on 1/8" O.D. Nylon and 1/8" O.D. Steel Tube



Threaded Sleeve Tube Fittings – Spin Drive Type

Carbon steel body with brass nut

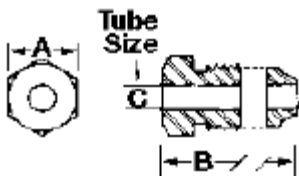
Part No.	Hole Size	Tube O.D.	A	B	Diam C	Hex D	Working Pressure PSI
82093	1/4"	1/8"	5/32"	5/8"	7/16"	5/16"	500 PSI



Threaded Sleeve Tube Fittings – Compression Nuts – One Piece

Brass unless otherwise posted * 303 Stainless Steel

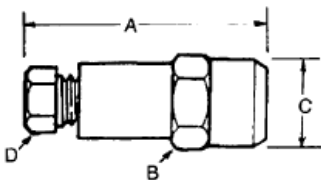
Part No.	Tube O.D.	B	C	Working Pressure PSI
66260	1/8"	1/2"	5/16"	500 PSI
*66260-9	1/8"	1/2"	5/16"	500 PSI



Threaded Sleeve Tube Fittings – Compression Nuts – Two Piece

Brass unless otherwise posted * 303 Stainless Steel

Part No.	Thread Size	A	B	C
83924	5/16"-24	5/16"	1/2"	1/8"
*83924-9	5/16"-24	5/16"	1/2"	1/8"

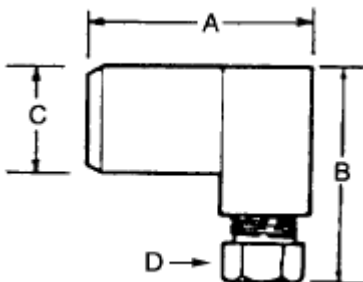


1/8" Tube to Snap-Connect to Grease Fitting - Straight

Carbon steel body with brass nut

Part No.	Tube O.D.	A	Hex B	C	Hex D	Working Pressure PSI
*82617	1/8"	1.18"	7/16"	.43"	1/4"	500 PSI

* uses 13112 compression nut - included



1/8" Tube to Snap-Connect to Grease Fitting - Straight

Carbon steel body with brass nut

Part No.	Tube O.D.	A	B	C	Hex D	Working Pressure PSI
*82618	1/8"	.83"	.86"	.43"	1/4"	500 PSI

* uses 13112 compression nut - included

**1/8" O.D. Metal Tube
Plated Steel & Stainless
Steel**



1/8" O.D. Tube – Steel & Stainless Steel					
Part No.	Tube O.D.	Material	Wall	Length	Working Pressure PSI
62175	1/8"	Steel zinc diechromate plated	.020	25 ft. coil	4,400 PSI
62948-9	1/8"	304 stainless steel	.028	20 ft. coil	9,000 PSI

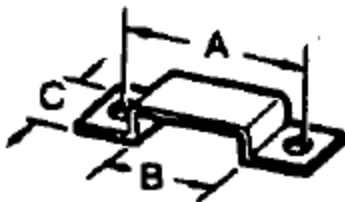
1/8" O.D. Nylon Tube



1/8" O.D. Nylon Tube					
Part No.	Tube O.D.	Wall	Length	Working Pressure PSI	Bend Radius
62256	1/8"	.026	25 ft. coil	625 PSI	.375"
62278	1/8"	.026	100 ft. coil	625 PSI	375"
62956	1/8"	.026	500 ft. coil	625 PSI	375"

Pro/Mark random length tube no. NBR-2-026

1/8" Tube Clamps



1/8" Tube Clamps				
Part No.	A	B	C	Number of Tubes
64532-1		1/8"	3/8"	1
64532-2	11/16"	1/4"	3/8"	2
64532-3	13/16"	3/8"	3/8"	3
64532-4	15/16"	1/2"	3/8"	4